

MONTHLY MEMBERSHIP PROGRESS REPORT

District 9 NE

Results as of: 5/31/2026

GMT:

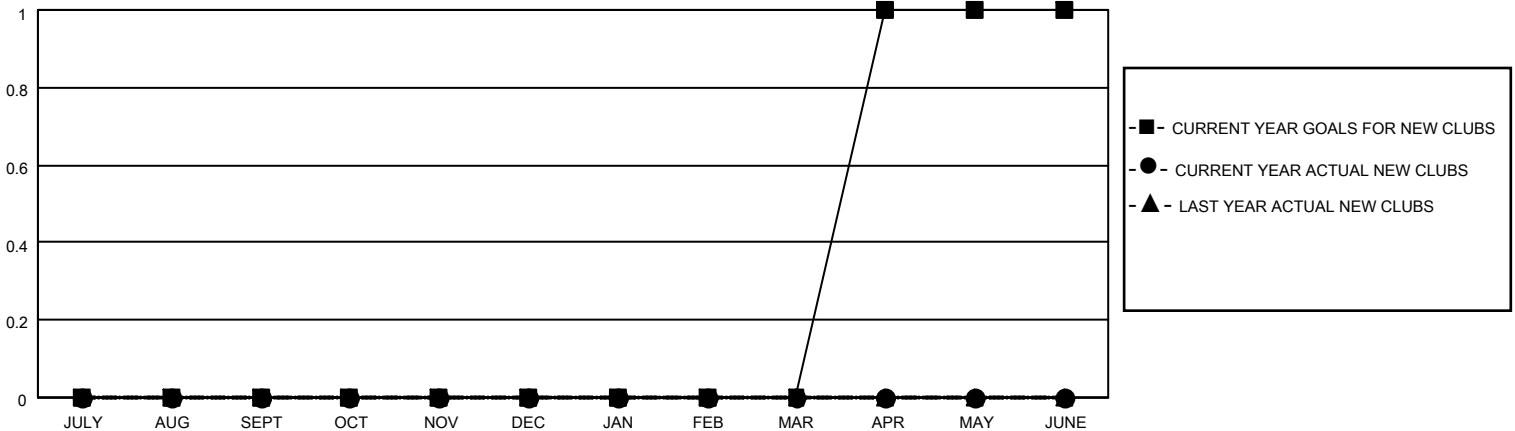
LOCATION IOWA

GMT CA

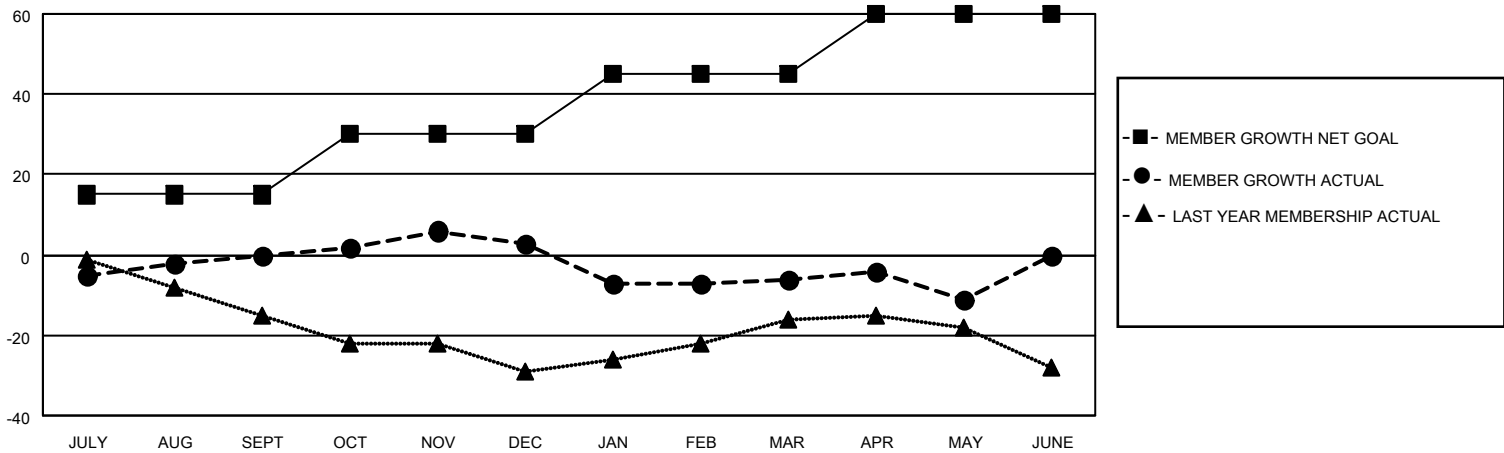
Clubs			
RESULTS FOR 2025-2026			
QUARTER	NEW CLUB GOAL	NEW CLUBS	DROPPED CLUBS
JULY/AUG/SEPT	0	0	0
OCT/NOV/DEC	0	0	0
JAN/FEB/MAR	0	0	0
APR/MAY/JUNE	1	0	0

Members			
RESULTS FOR 2025-2026			
QUARTER	MEMBER GROWTH NET GOAL	MEMBER GROWTH ACTUAL	DROPPED MEMBERS ACTUAL (including transfers)
JULY/AUG/SEPT	15	25	24
OCT/NOV/DEC	15	15	12
JAN/FEB/MAR	15	17	26
APR/MAY/JUNE	15	7	12

GOALS AND ACTUAL NEW CLUBS CUMULATIVE



GOALS AND ACTUAL MEMBERS CUMULATIVE



DROPPED CLUBS: 0	23 CLUBS OF 40 ADDED 1 OR MORE NEW MEMBERS	<u>GENDER DISTRIBUTION</u>	
<u>DROPPED MEMBERS</u>		MALE	785 (74.76%)
DECEASED	10	FEMALE	265 (25.24%)
CLUB CANCELLED	0	TOTAL FAMILY UNIT MEMBERS	
OTHER	64	159	
TOTAL	74	FAMILY MEMBERS PAYING HALF DUES	
		80	

[CLICK HERE FOR CUMULATIVE MEMBERSHIP DATA](#)